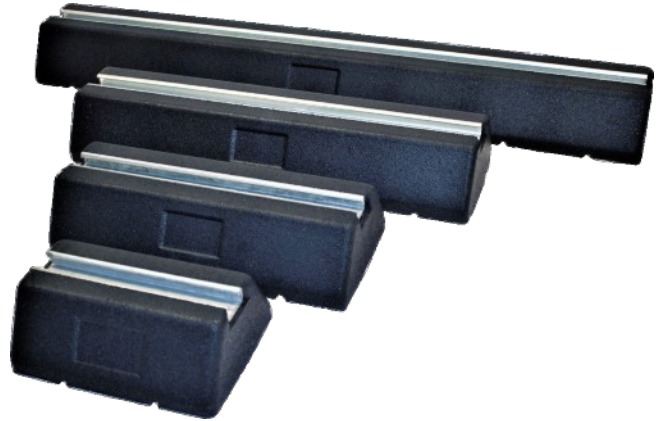




Core values, quality products

SFR Rubber Feet

Available in 4 sizes our standard SRF range are a practical and versatile support solution for pipework and cable trays. They can also be used for smaller outdoor condensing units or air source heat pump installations. The feet have a 41mm x 21mm 'bonded' in channel, which is recessed into the top face allowing you to use standard channel fixings to secure your services to the feet.



Our SFR range are made from Recycled SBR rubber, making them eco friendly. They also have the added advantage of vibration and noise absorption which makes them the perfect product for roof or ground level installation.

Part No	Model	Length (mm)	Width (mm)	Height (mm)	Max Loading Per Foot (kg)
SFFX250	SFR250	250	180	95	160
SFFX400	SFR400	400	180	95	240
SFFX600	SFR600	600	180	95	450
SFFX1000	SFR1000	1000	180	95	645

MATERIAL SPECIFICATION

SBR-Recycled Rubber. Bound using a ratio of high quality moisture curing Polyurethane Pre-Polymer.
BS7188:1989+A2;2009 and BS EN1176-7:2008

METAL PROFILE

Aluminium strut 41mm x 21mm profile compatible with strut fixings.

WORKING CONDITIONS

Suitable for internal or external applications in temperatures between -40°C to +80°C. BSEN60068-2-14

Please contact coresupport@sbs.co.uk for more information.